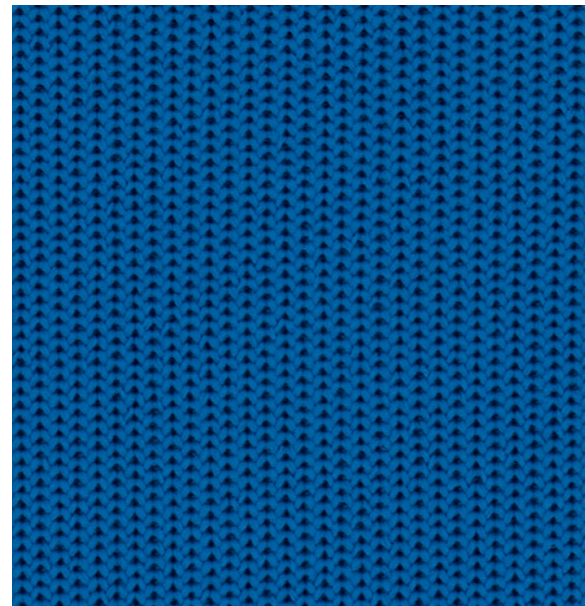


Biodegradable*
Bleach Cleanable

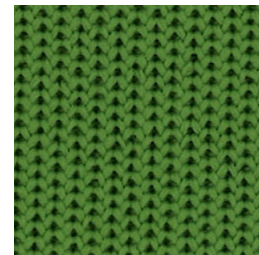
Reset 673

Reset 673

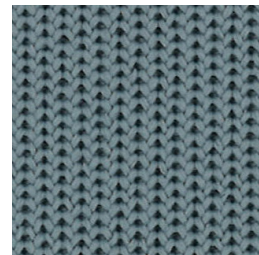
CLEAN IMPACT **TEXTILES**®



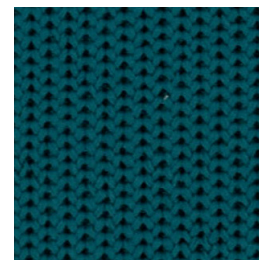
Splash
11



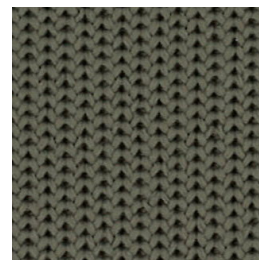
Wild Fern
09



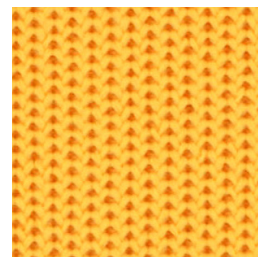
Fossil
05



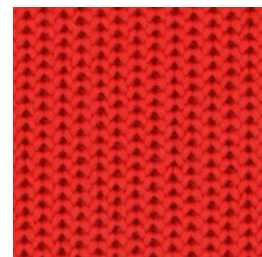
Turquoise
12



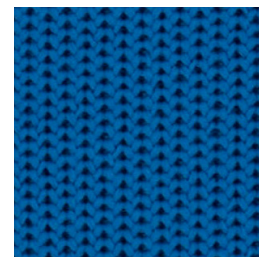
Timber
08



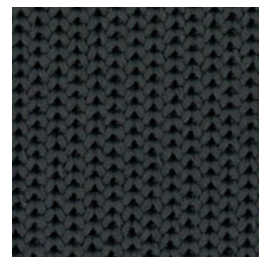
Sun Yellow
07



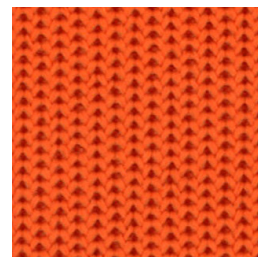
Bright Red
06



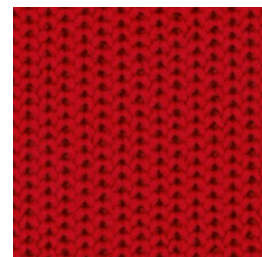
Splash
11



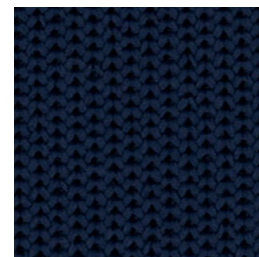
Peppercorn
02



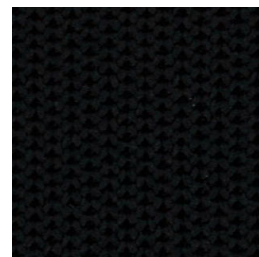
Malibu Heat
10



Geranium
04



Navy
03



Licorice
01

Specifications

Content	100% post-consumer recycled biodegradable* polyester
Weight	20.1 oz./sq. yd. 677 g/sq. m.
Dimensions	Knit to specific dimensions and shape
Pattern Repeat	None
Backing / Finish	None

Performance

A *	Abrasion Resistance**	Wyzenbeek ASTM D 4157 (cotton duck) Martindale ISO 12947-2	250,000 double rubs 100,000 cycles
★	Breaking Strength	US ASTM 5034	312 lbf min. machine direction 298 lbf min. cross direction
	Pilling	US ASTM D3511 / EN ISO 12945-2	Class 4 / Class 4
☪	Crocking - Wet	US AATCC 8 / EN ISO 105x12	Class 4 / Class 4
	Crocking - Dry	US AATCC 8 / EN ISO 105x12	Class 4 / Class 4
☀	Light Fastness	US AATCC 16.3 Option 3 (40 hr.) EN ISO 105-B02	Class 4 BSW 6

Flammability***

☪	US CAL 117 – 2013 UFAC / NFPA 260 Class 1 BS EN 1021 1 & 2 Cigarette and Match BS 7176 Burn Test
---	---

Ordering Information

Parts are available in various standard sizes that can be directly upholstered; eliminating cutting and sewing, while reducing waste. Custom size options are also available upon request; minimum order quantities may apply.

For samples, contact teknit.samples@duvaltex.com

Sustainability

Biodegradable* CLEAN IMPACT TEXTILES® address the daunting problem of how to deal with polyester fabric at the end of its useful life. Biodegradable* in landfill after 1,278 days (tested under ASTM D5511).

*Rate and extent of biodegradation into elements found in nature after 1,278 days under ASTM D5511 (Anaerobic Biodegradation of Plastic Materials Under High Solids Anaerobic Digestion Conditions). The test was done with the same component (PET) polyester and biocatalyst additive. No evidence of further degradation.

**Multiple factors affect fabric durability and appearance retention, including end-user application and proper maintenance. Wyzenbeek test results above 100,000 double rubs have not been shown to be an indicator of increased lifespan.

***Data indicates performance for industry standard laboratory tests and cannot imply performance in actual fire conditions.

****Certification Marks owned by the Association for Contract Textiles, Inc.

Performance

- Enhanced Abrasion
- Bleach Cleanable

Cleaning/ Maintenance

Standard Care Label
W-S Clean with water-based cleaning agents, foam or pure water solvents. Vacuuming or light brushing is recommended to prevent dust and soil buildup. May also be cleaned with a solution of 9 parts water/1-part concentrated household bleach. Rinse with clean cold water to remove bleach residue.

Sustainability

- Recycled content
- Recyclable
- Biodegradable*
- Zero Waste

Warranty

Fabric covered by a 10-year wear-through warranty. Specific terms and conditions available upon request.

Notations:

- Application testing of this product is recommended
- Colors may vary between dye lots

TEKNIT®

duvaltex

TEKNIT®

Proudly knit in America and supporting our local communities

5300 CORPORATE GROVE DR. SE • SUITE 250 • GRAND RAPIDS, MI 49512
616.226.9027 • DUVALTEX.COM/TEKNIT