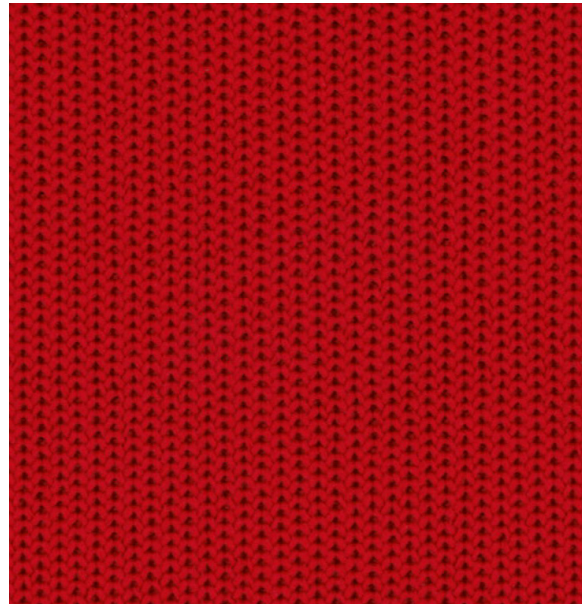


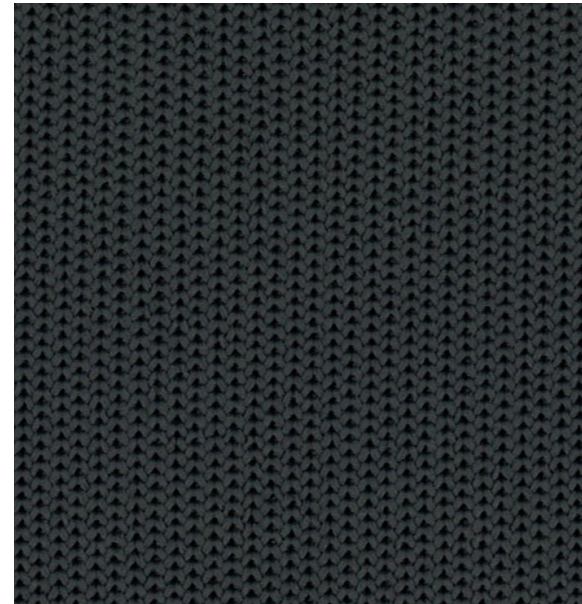
Bleach Cleanable

Revive 692

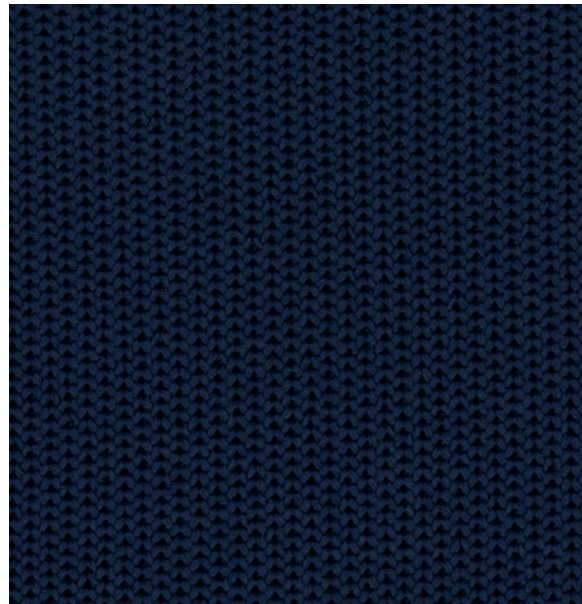
Revive 692



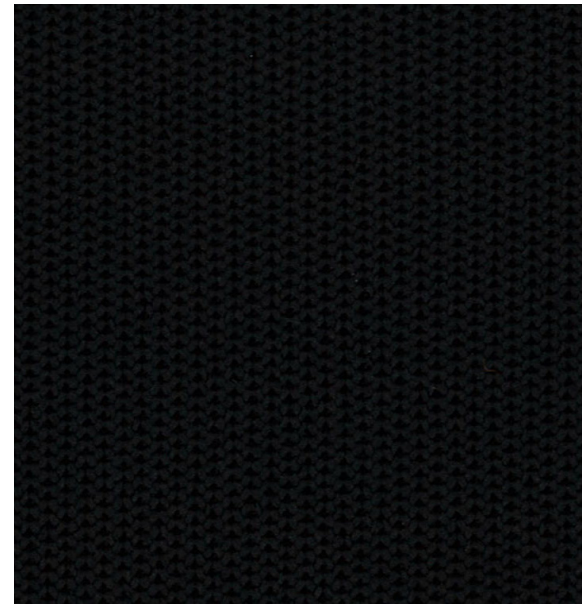
Geranium
04



Peppercorn
02



Navy
03



Licorice
01

Specifications

Content	100% polyester
Weight	21.5 oz./sq. yd.
Dimensions	Knit to specific dimensions and shape
Pattern Repeat	None
Backing / Finish	None

Performance

A * Abrasion Resistance**	Wyzenbeek ASTM D 4157 (cotton duck)	250,000 double rubs
✳ Breaking Strength	US ASTM 5034	166 lbf min. machine direction 217 lbf min. cross direction
	Pilling	US ASTM D3511 Class 4
☘ Crocking - Wet	US AATCC 8	Class 4-5
	Crocking - Dry	US AATCC 8
☀ Light Fastness	US AATCC 16.3 Option 3 (40 hr.)	Class 4

Flammability***

🔥	US CAL 117 – 2013 UFAC / NFPA 260 Class 1
---	--

Ordering Information

Parts are available in various standard sizes that can be directly upholstered; eliminating cutting and sewing, while reducing waste. Custom size options are also available upon request; minimum order quantities may apply.

For samples, contact teknit.samples@duvaltex.com

**Multiple factors affect fabric durability and appearance retention, including end-user application and proper maintenance. Wyzenbeek test results above 100,000 double rubs have not been shown to be an indicator of increased lifespan.

***Data indicates performance for industry standard laboratory tests and cannot imply performance in actual fire conditions.

****Certification Marks owned by the Association for Contract Textiles, Inc.

Performance

- Enhanced Abrasion
- Bleach Cleanable

Cleaning/ Maintenance

Standard Care Label
W-S Clean with water-based cleaning agents, foam or pure water solvents. Vacuuming or light brushing is recommended to prevent dust and soil buildup. May also be cleaned with a solution of 9 parts water/1-part concentrated household bleach. Rinse with clean cold water to remove bleach residue.

Sustainability

- Recyclable
- Zero Waste

Warranty

Fabric covered by a 10-year wear-through warranty. Specific terms and conditions available upon request.

Notations:

- Application testing of this product is recommended
- Colors may vary between dye lots