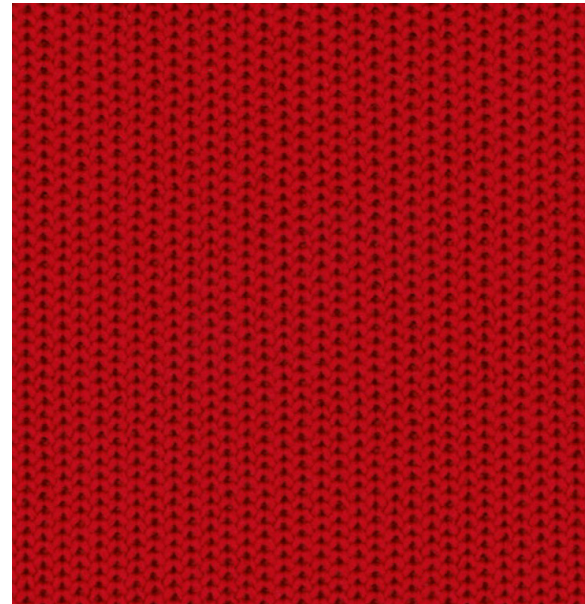


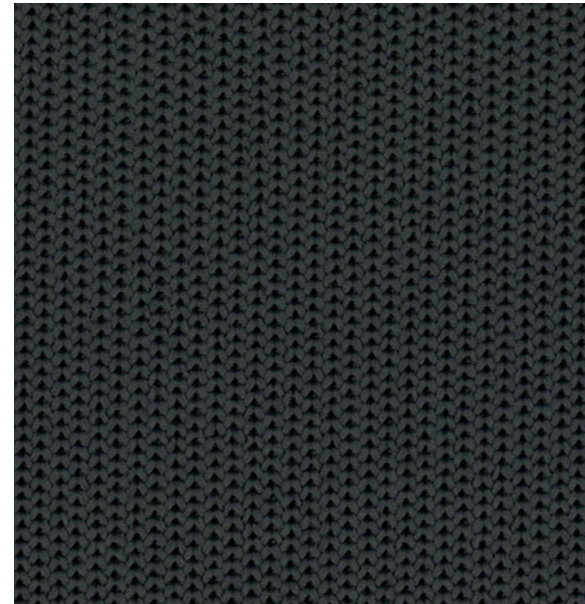
Bleach Cleanable

Revive 692

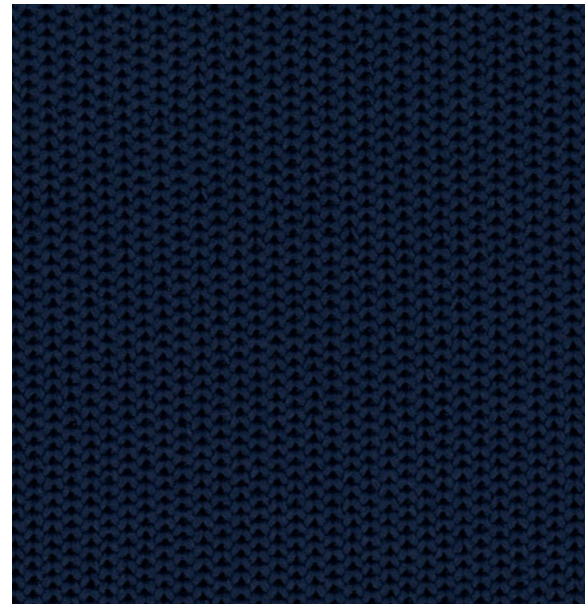
Revive 692



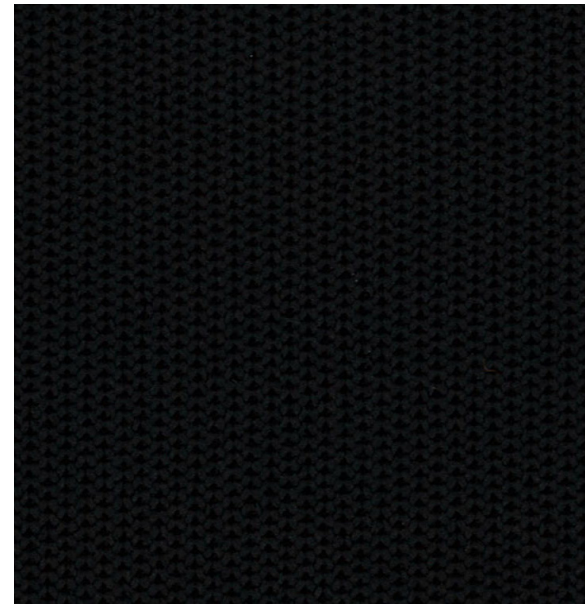
Geranium
04



Peppercorn
02



Navy
03



Licorice
01

Specifications

Content	100% post-consumer polyester
Weight	20.1 oz./sq. yd. 677 g/sq. m.
Dimensions	Knit to specific dimensions and shape
Pattern Repeat	None
Backing / Finish	None

Performance

A *	Abrasion Resistance**	Wyzenbeek ASTM D 4157 (cotton duck) Martindale ISO 12947-2	250,000 double rubs 100,000 cycles
★	Breaking Strength	US ASTM 5034	312 lbf min. machine direction 298 lbf min. cross direction
	Pilling	US ASTM D3511 / EN ISO 12945-2	Class 4 / Class 4
☪	Crocking - Wet	US AATCC 8 / EN ISO 105x12	Class 4 / Class 4
	Crocking - Dry	US AATCC 8 / EN ISO 105x12	Class 4 / Class 4
☀	Light Fastness	US AATCC 16.3 Option 3 (40 hr.) EN ISO 105-B02	Class 4 BSW 6

Flammability***

☪	US CAL 117 – 2013 UFAC / NFPA 260 Class 1 BS EN 1021 1 & 2 Cigarette and Match BS 7176 Burn Test
---	---

Ordering Information

Parts are available in various standard sizes that can be directly upholstered; eliminating cutting and sewing, while reducing waste. Custom size options are also available upon request; minimum order quantities may apply.

For samples, contact teknit.samples@duvaltex.com

**Multiple factors affect fabric durability and appearance retention, including end-user application and proper maintenance. Wyzenbeek test results above 100,000 double rubs have not been shown to be an indicator of increased lifespan.

***Data indicates performance for industry standard laboratory tests and cannot imply performance in actual fire conditions.

****Certification Marks owned by the Association for Contract Textiles, Inc.

Performance

- Enhanced Abrasion
- Bleach Cleanable

Cleaning/Maintenance

Standard Care Label
W-S Clean with water-based cleaning agents, foam or pure water solvents. Vacuuming or light brushing is recommended to prevent dust and soil buildup. May also be cleaned with a solution of 9 parts water/1-part concentrated household bleach. Rinse with clean cold water to remove bleach residue.

Sustainability

- Recycled content
- Recyclable
- Zero Waste

Warranty

Fabric covered by a 10-year wear-through warranty. Specific terms and conditions available upon request.

Notations:

- Application testing of this product is recommended
- Colors may vary between dye lots